

Date July 11, 2007  
Subject № GHB7709

## Announcement for change of terminal pins in SFS/SFCS series

We hope this letter finds you well and we always appreciate your business with us.  
We would like to make a following announcement of change and ask for your understanding of this revision.

### Contents

#### 1. Description of the change

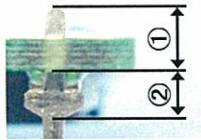
We will change SFS series's terminal pins to the one using in SFLS series, to improve our production capability.

Specifications has no reflections with this change.

#### (1) Applicable Model

S F S / S F C S series : All models including modified product.

#### (2) Details of change



	Before	After
①	2.25	1.95
②	1.7	1.35

Fig1. Shape of terminal pin

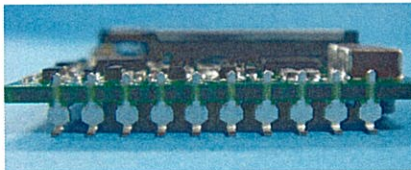


Fig2. Before change(SMD mounting type)

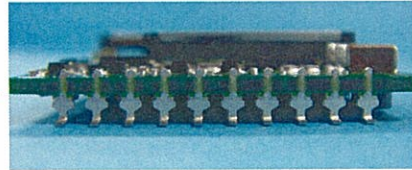


Fig3. After change(SMD mounting type)

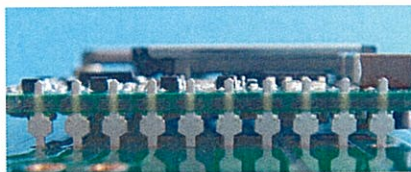


Fig4. Before change(through-hole mounting type)

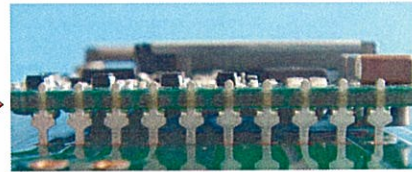


Fig5. After change(through-hole mounting type)

#### (3) Schedule

This change will be applied to the production from middle of September, 2007.

\*Actual applicable date will depend on component inventory.

Thank you for your understanding.  
Best Regards

A handwritten signature in black ink that reads 'Isao Yasuda'.

Isao Yasuda  
General Manager  
AS DESIGN DEPT.  
COSEL Co., Ltd